

MERRICK MODEL 970 WEIGH BELT FEEDERS

MATERIALS OF CONSTRUCTION

- 304 Stainless Steel Parts, 316 Stainless Steel is Optional
- All Non-Metallic Parts are FDA Approved

POWER REQUIREMENTS

- 115V ±10% Single Phase, 50/60 Hz
- Optional Voltages / Phase / Hz

VARIABLE SPEED DRIVE

- AC or DC Motor
- HP from 0.25 - 1.0 HP
- SCR or VFD Configurations

ACCURACY & REPEATABILITY

- Standard Accuracy is better than ±0.25%
- Standard Repeatability is better than ±1.0%
- Feedrate Turndown is 40:1

COMMON OPTIONS

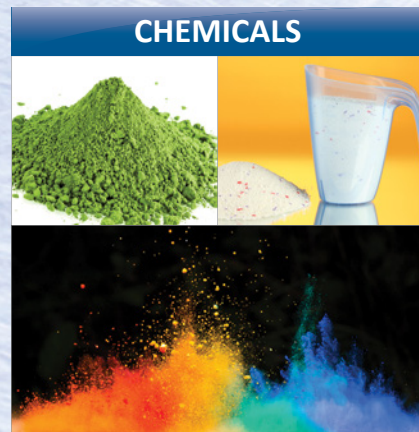
- Manual Material Cut-off Gate (Inlet)
- Flexible Inlet and Discharge Connections
- Calibration Test Chain
- Conveyor Maintenance Arms
- Dust Collection Port
- Abrasion Resistant Design
- Automatic Sample Valve



Model 970 Weigh Belt Feeder

APPLICATIONS AND MATERIALS

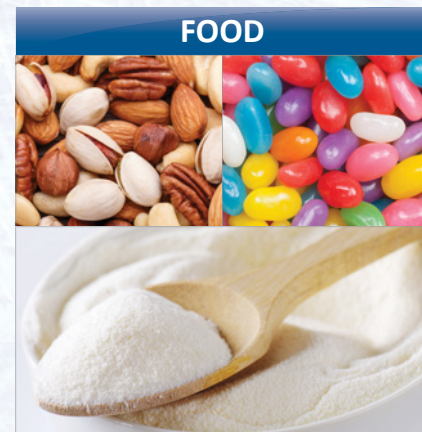
The Model 970 is used for both food and chemical processes.



CHEMICALS



PLASTICS



FOOD

DYNAMIC INNOVATIONS SINCE 1908
WEIGHING, FEEDING, CONTROLS & ENVIRONMENTAL SOLUTIONS

MODEL 970 WEIGH BELT FEEDERS



SANITARY, ACCURATE, DURABLE, SIMPLE

FAMILY OF
MERRICK
COMPANIES

10 ARTHUR DRIVE LYNN HAVEN, FL 32444 USA
CALL WORLDWIDE +1 850.265.3611
EN ESPAÑOL +1 850.271.7834
WWW.MERRICK-INC.COM



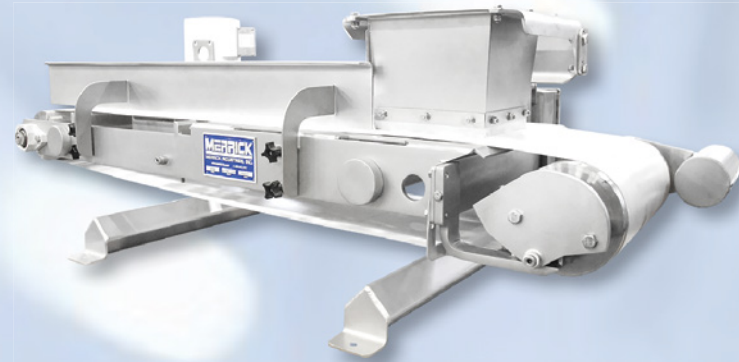
MERRICK MODEL 970 WEIGH BELT FEEDERS

DESIGNED FOR LONG LASTING PERFORMANCE AND RELIABILITY

All Model 970 versions are designed to meter bulk materials into a process with Gravimetric precision.

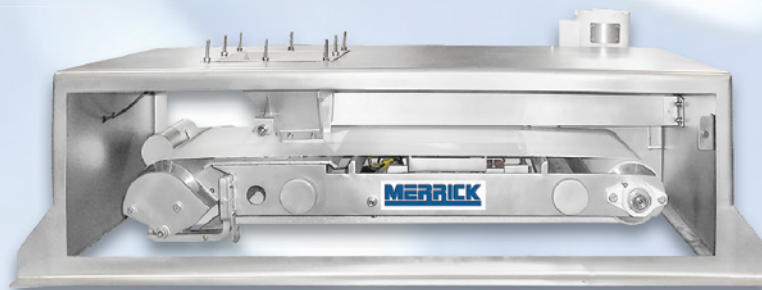
The 970 Weigh Belt Feeder generates a weight signal which is used to modulate the speed of the belt to maintain a steady feedrate at the desired setpoint.

The Model 970 helps eliminate wasted product by monitoring the material early in your process. Feedrate control, totalization and alarms ensure that the high quality of your end product is always the same each day, month and year.



**Model 970N Weigh Belt Feeder
Open (No Enclosure)**

MERRICK's Model 970N has the same conveyor and purpose as the Model 970, but it doesn't have an outer shell or enclosure. This cost effective feature allows for easier access and maintenance as well as less space needed for the installation.

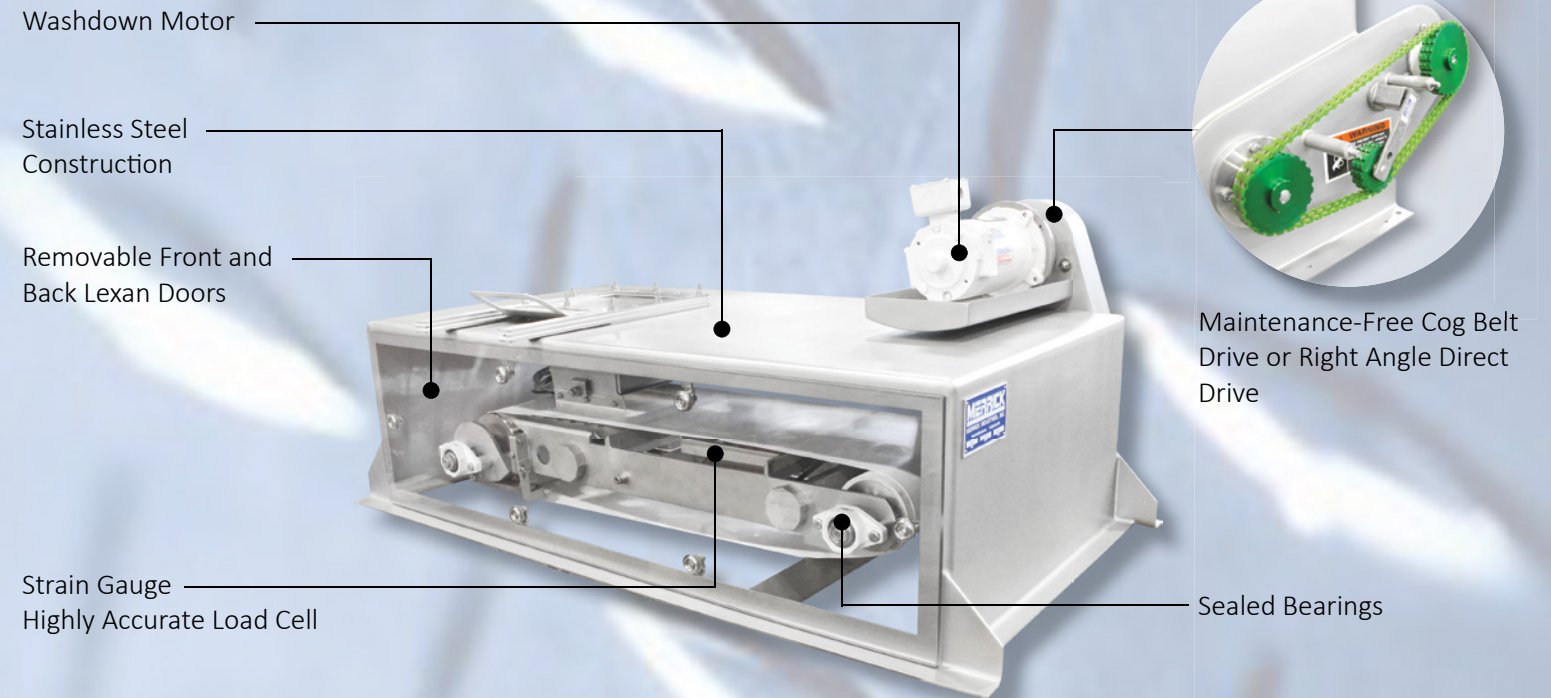


**Model 970I Weigh Belt Feeder
Industrial Version**

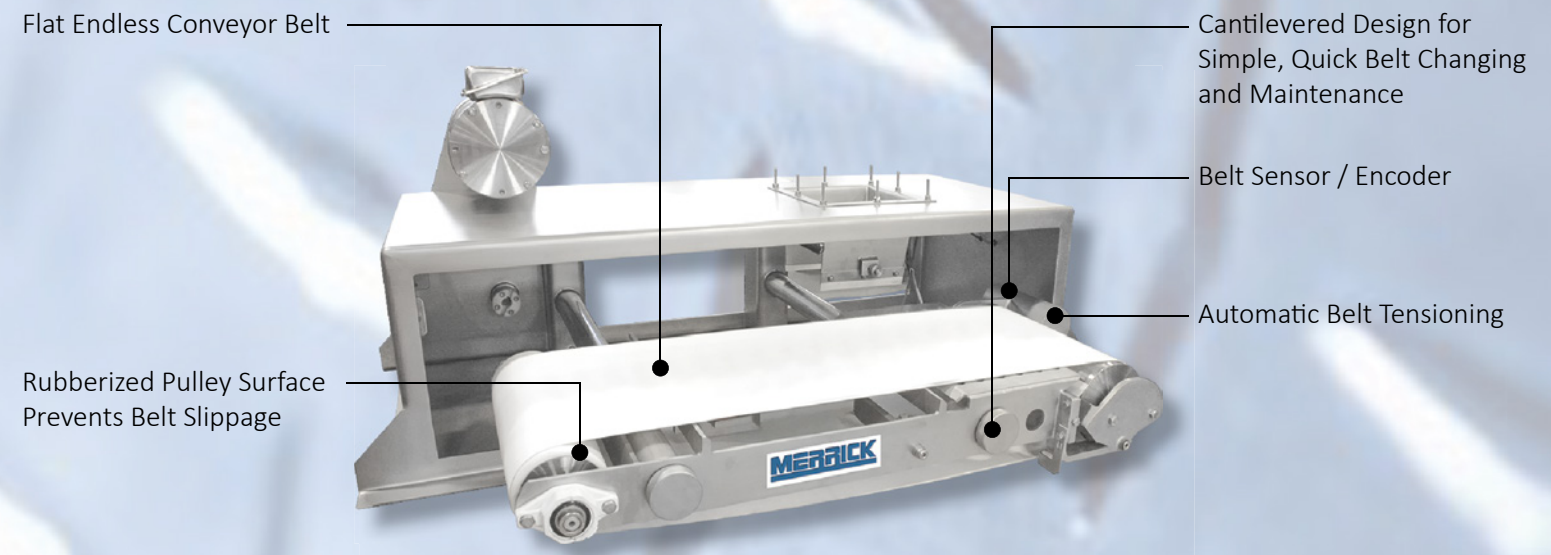
The Model 970I is primarily used for industrial type applications such as mineral and chemical feeding where food grade finishes and features are not required. This results in a lower investment with the same high performance.

MERRICK MODEL 970 WEIGH BELT FEEDERS

STANDARD FEATURES



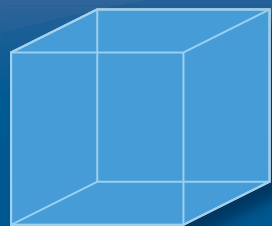
Model 970 Weigh Belt Feeder



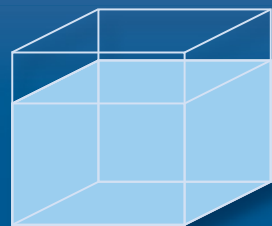
STANDARD DESIGN

- Best Accuracy Performance of any Weigh Belt Feeder: $\pm 0.25\%$
- Highest Feedrate Turndown of any Weigh Belt Feeder: 40:1
- 304 Stainless Steel Construction Eliminates Painting and Resists Corrosion
- All Welds are Continuous and Ground Smooth
- Pulley Bearings are a White Polymer with Stainless Steel Inserts and are Sealed for Life for Low Maintenance
- Open Construction and Few Moving Parts Minimize Water and Contaminant Retention
- Washdown Rated

WHY GRAVIMETRIC? IT'S IN THE CUBE!



Aerated
100% Filled



Poured
75% Filled



Packed
50% Filled

A Volumetric Feeder does not compensate for Bulk Density changes in the material. This can cause errors in the feedrate.

A MERRICK Gravimetric Feeder uses a weight signal to compensate for Bulk Density changes ensuring accurate feedrate regardless of density changes.

DIMENSIONS AND SPECIFICATIONS

BELT WIDTH	MINIMUM FEEDRATE	MAXIMUM FEEDRATE	LENGTH INFEED TO DISCHARGE	MOTOR HP
6 Inches 152 mm	60 lb/Hr 27 Kg/Hr	5,500 lb/Hr 2,517 Kg/Hr	28 Inches 711 mm	0.25 HP 0.19 KW
12 Inches 305 mm	70 lb/Hr 32 Kg/Hr	15,188 lb/Hr 6,889 Kg/Hr	28 Inches 711 mm	0.25 HP 0.19 KW
24 Inches 610 mm	205 lb/Hr 93 Kg/Hr	60,300 lb/Hr 27,352 Kg/Hr	33 Inches 838 mm	0.50 HP 0.37 KW
30 Inches 762 mm	Consult Factory	Consult Factory	Custom	Custom

* Assumes 30.0 lbs/ft³